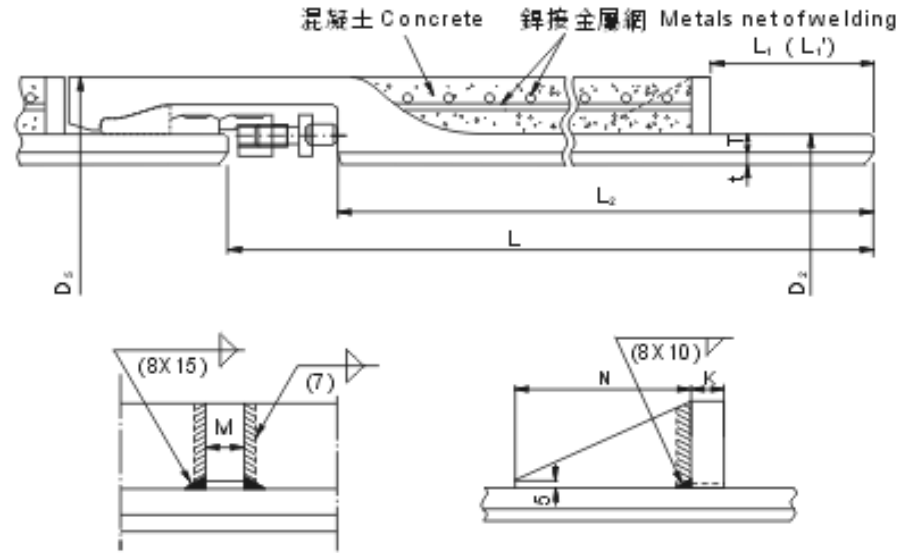


Type U Jacking Method Ductile Iron Pipe



DN	Thickness										Lining Thickness t	Effective Length L	Dimensions							DN	
	T												D ₂	D ₅	L ₁	L ₂	M	N	K		L ₁ '
	D1	D1.5	D2	D2.5	D3	D3.5	D4	D4.5	D5	D5											
800	13.5	-	12.0	-	11.0	-	10.0	-	9.0	6.0	6000	836	938	160	5895	19	140	19	360	800	
900	15.0	-	13.0	-	12.0	-	11.0	-	9.5	6.0	6000	939	1043	160	5895	19	140	19	360	900	
1000	16.5	-	14.5	-	13.0	-	12.0	-	10.5	6.0	6000	1041	1151	165	5895	25	140	25	380	1000	
1100	18.0	-	15.5	-	14.0	-	13.0	-	11.0	6.0	6000	1144	1258	165	5895	25	140	25	380	1100	
1200	19.5	-	17.0	-	15.0	-	13.5	-	11.5	6.0	6000	1246	1362	165	5895	25	140	25	380	1200	
1350	21.5	-	18.5	-	16.5	-	15.0	-	12.5	9.0	6000	1400	1521	175	5895	25	140	25	420	1350	
1500	23.5	-	20.5	-	18.0	-	16.5	-	14.0	9.0	6000	1554	1679	180	5895	28	150	28	420	1500	
1600	25.0	23.5	22.0	20.5	19.0	18.0	17.5	16.0	14.5	9.0	4000	1650	1786	180	3885	28	150	28	440	1600	
1650	25.5	24.0	22.5	21.0	19.5	18.5	18.0	16.5	15.0	9.0	4000	1701	1839	180	3885	28	150	28	440	1650	
											5000				4885						
1800	28.0	26.0	24.0	22.5	21.0	20.0	19.5	18.0	16.0	9.0	4000	1848	1990	180	3885	28	150	28	480	1800	
											5000				4885						
2000	30.5	28.5	26.5	25.0	23.5	22.0	21.0	19.5	18.0	9.0	4000	2061	2209	185	3885	32	160	32	530	2000	
											5000				4885						

Note: L₁' is the size of ahead pipe.